

Products /  **CASTALDI** / TELLUX D44 / D44 TELLUX/R1 / D44K/R1-LWN

TELLUX D44 D44K/R1-LWN

TECHNICAL DATA

GENERAL



| | |
|--------------------|--|
| Item code | D44K/R1-LWN |
| Place installation | outdoor |
| Name | D44 TELLUX/R1 / D44K/R1-LWN ground recessed |
| Note | 5000K on request. |
| Standard colour | stainless steel frame sandblasted |
| Environments | façades and architectural works, wellness, hallway, conference hall, places of worship |



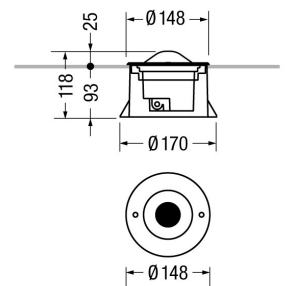
PHYSICAL

| | |
|-------------------|---|
| Installation type | ground recessed |
| Mounting type | with rough-in housing |
| Mounting note | On normally inflammable surfaces allowed. |
| Painting | Polyester powder coating, with a pluri-processed against corrosion (passed the exposure of over 1500 hours in a saline mist environment). |
| Screws | AISI 304 stainless steel screws. |
| Seals | Silicone Rubber. |
| Temperature glass | 40°C |
| Static load | 2000Kg |
| Body | AISI 316 stainless steel frame sandblasted. |



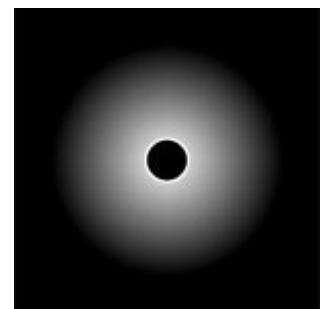
DIMENSIONS

| | |
|-------------------------------|-------|
| D: Total diameter device (mm) | 148 |
| Built-in shaped | Round |
| Diameter built-in (mm) | 170 |
| Built-in depth (mm) | 93 |
| Weight (kg) | 1,2 |
| Volume piece packed (m3) | 5 |



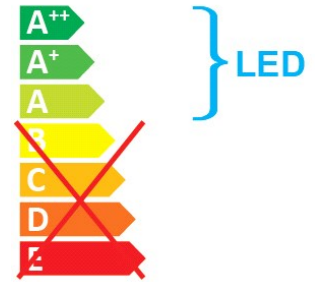
OPTICAL SYSTEMS

| | |
|--------------|---|
| Emission | radial |
| Opening beam | diffused |
| Diffuser | Unbreakable UV-resistant polycarbonate. |



ENERGY SAVING

This luminaire contains built-in LED lamps
The lamps cannot be changed in the luminaire



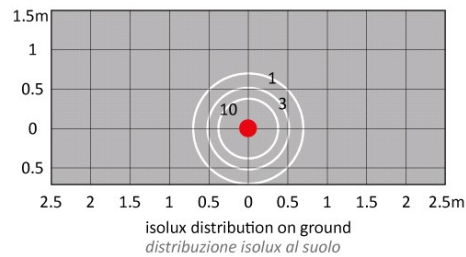
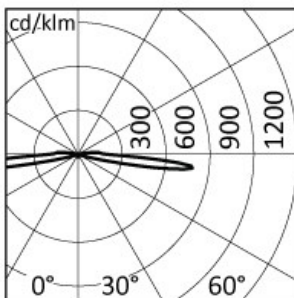
SOURCES

| Source Type | Source Power | System Power | Source | Lamp Socket | Sources Temperature Colour | Nominal Flux | Output Flux | Source description |
|-------------|--------------|--------------|--------|-------------|----------------------------|--------------|-------------|--------------------|
| LED | 2W | - | LED | - | 4000K | 117 lm | 49 lm | - |

ELECTRICAL

| | |
|-----------------------|--|
| Ballast type | Electronic |
| Mounting ballast type | Integral |
| Line input | Pre-wired and tested with resin sealed watertight H07RN-F cable (for a fast and secure connection to the main power line, use ACS/CR1 connector or similar). |
| Voltage | 220-240V |
| Frequency | 50-60Hz |

PHOTOMETRICS



NORMS / DIRECTIVES

| | |
|------------|---------------------------|
| Norms | EN 60598-1, EN 60598-2-13 |
| Directives | 2014/35/UE, 2014/30/UE |

ACCESSORIES

INCLUDED ACCESSORIES

Rough-in housing

Ground and Wall rough-in housing box, high impact resistant composite technopolymer (Code PT0719).



OPTIONAL ACCESSORIES

Electrical

Accessory code ACS/CR1

Technical description
Fast IP68 connector 1bar (10m-1h) for cable Ø7-12mm - 3x1.5mm.



Accessory code ACS/CR6

Technical description
4 ways IP68 wiring box for cable Ø5-14mm - 3x1,5mm.

